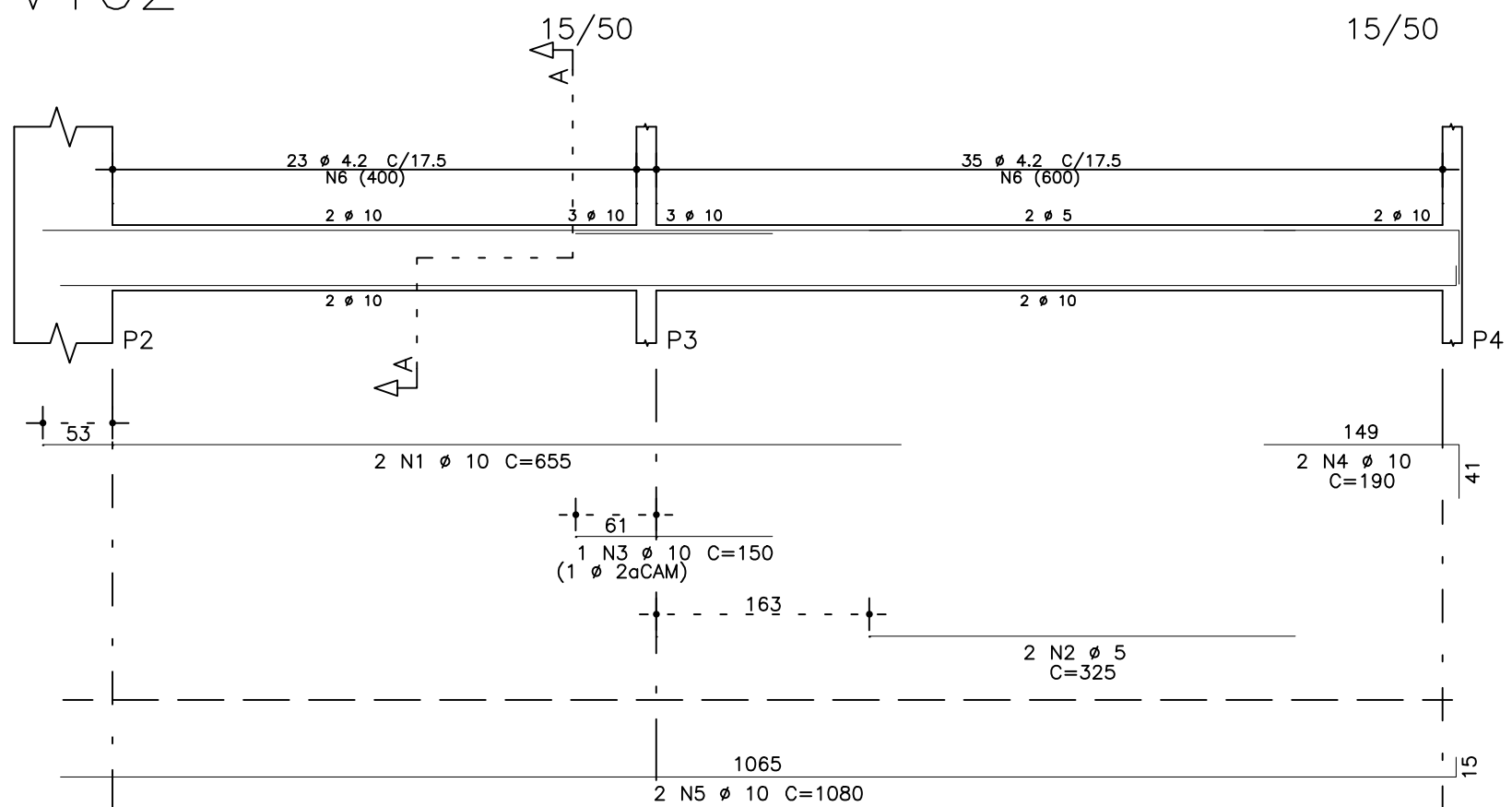
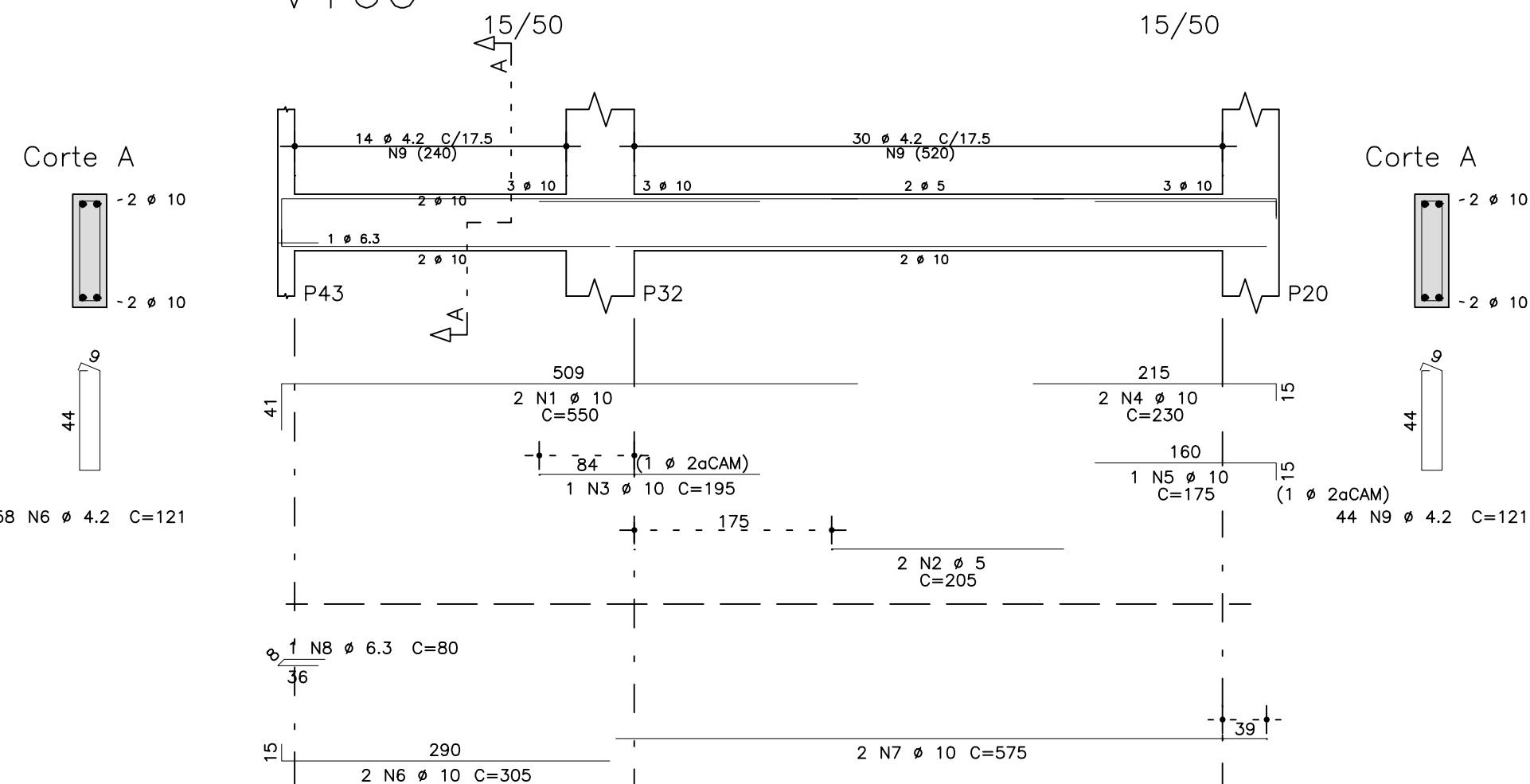


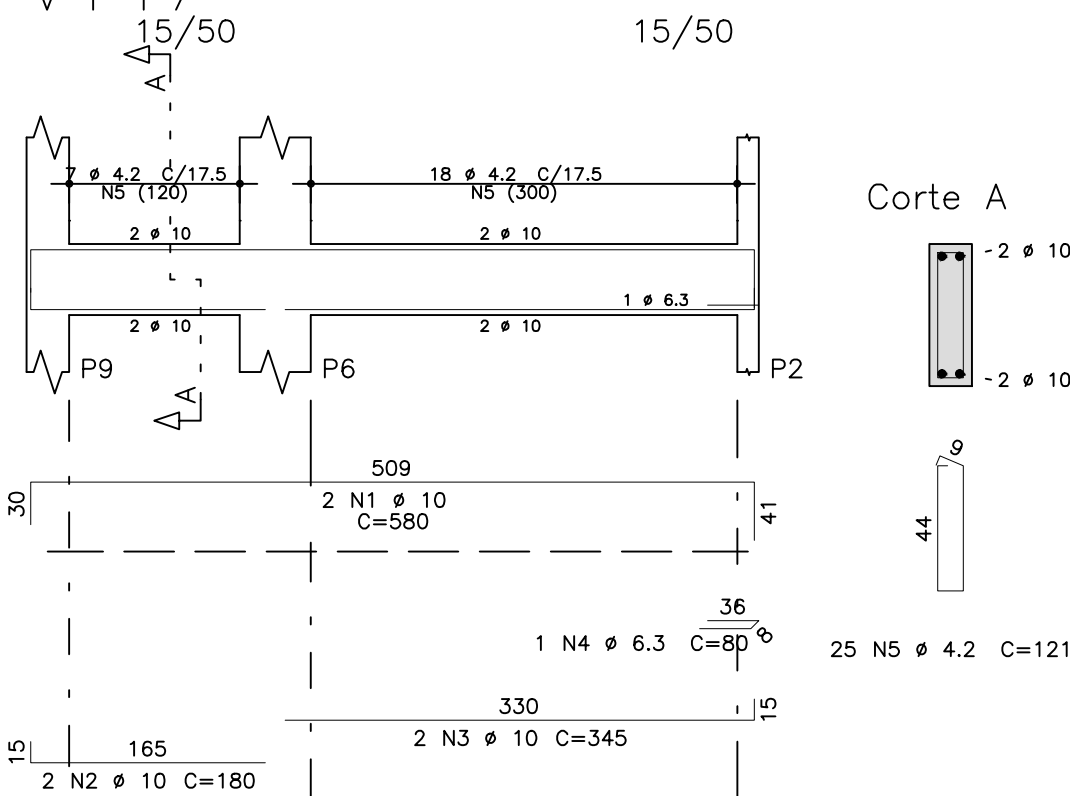
V102



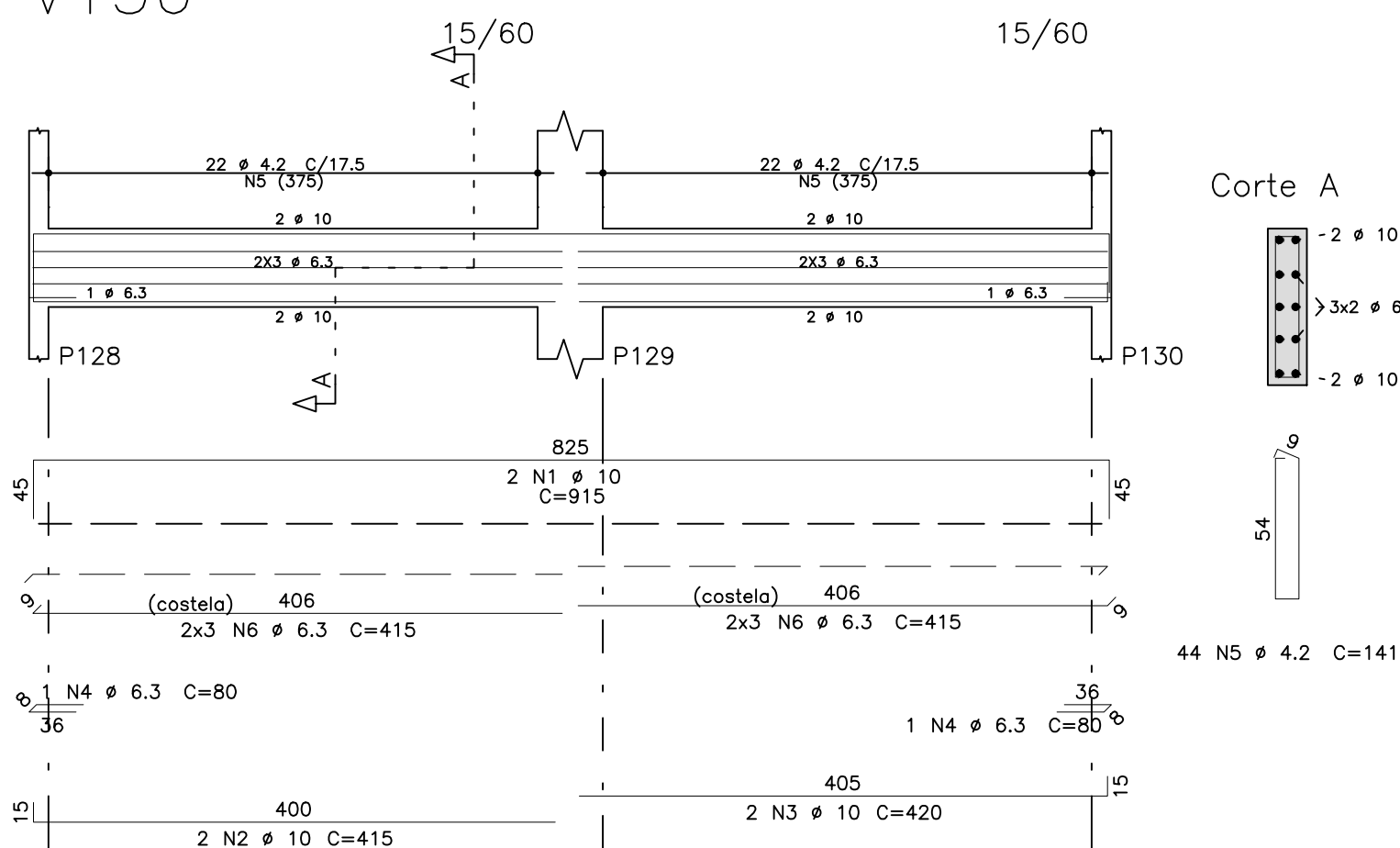
V160



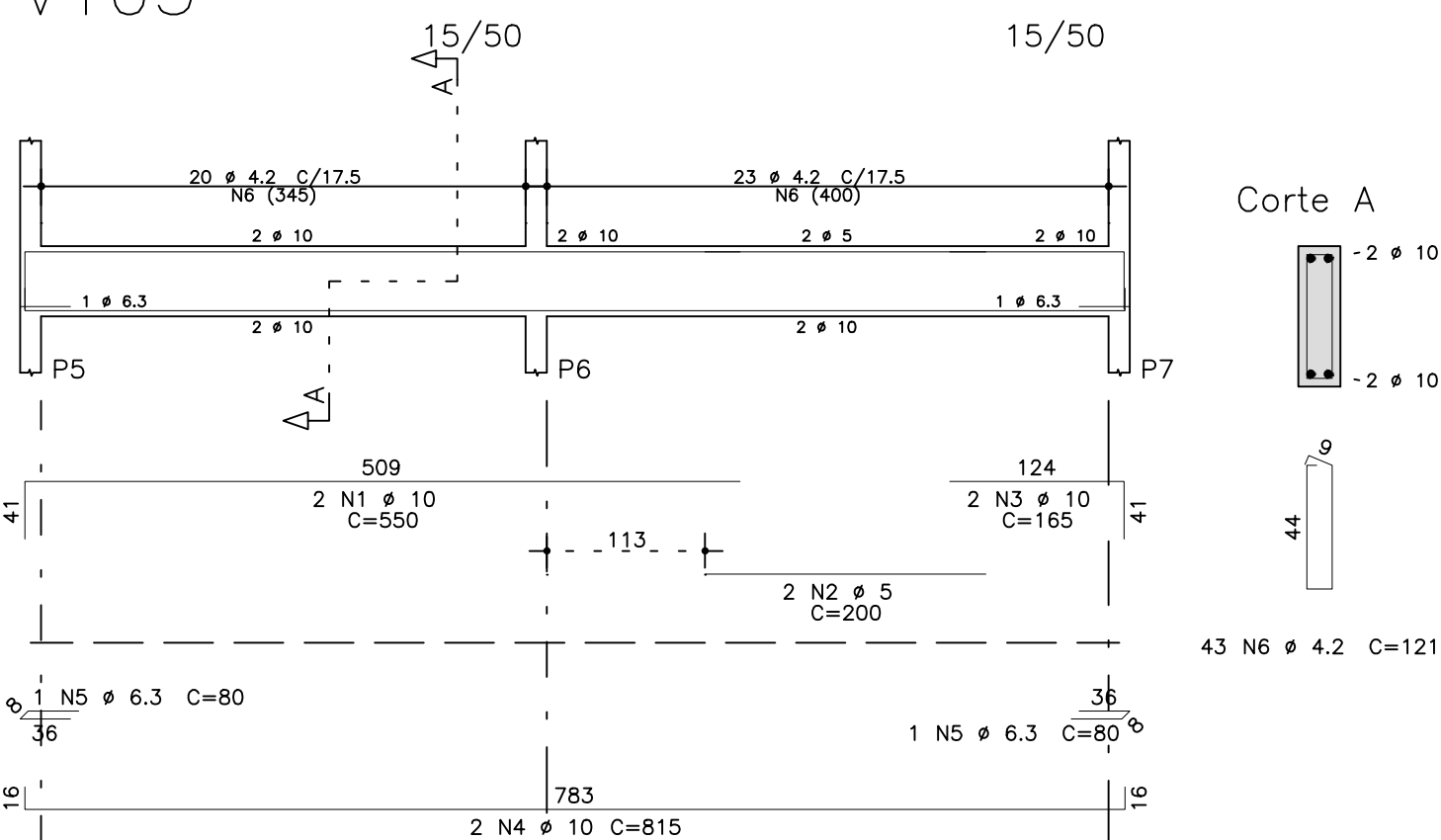
V147



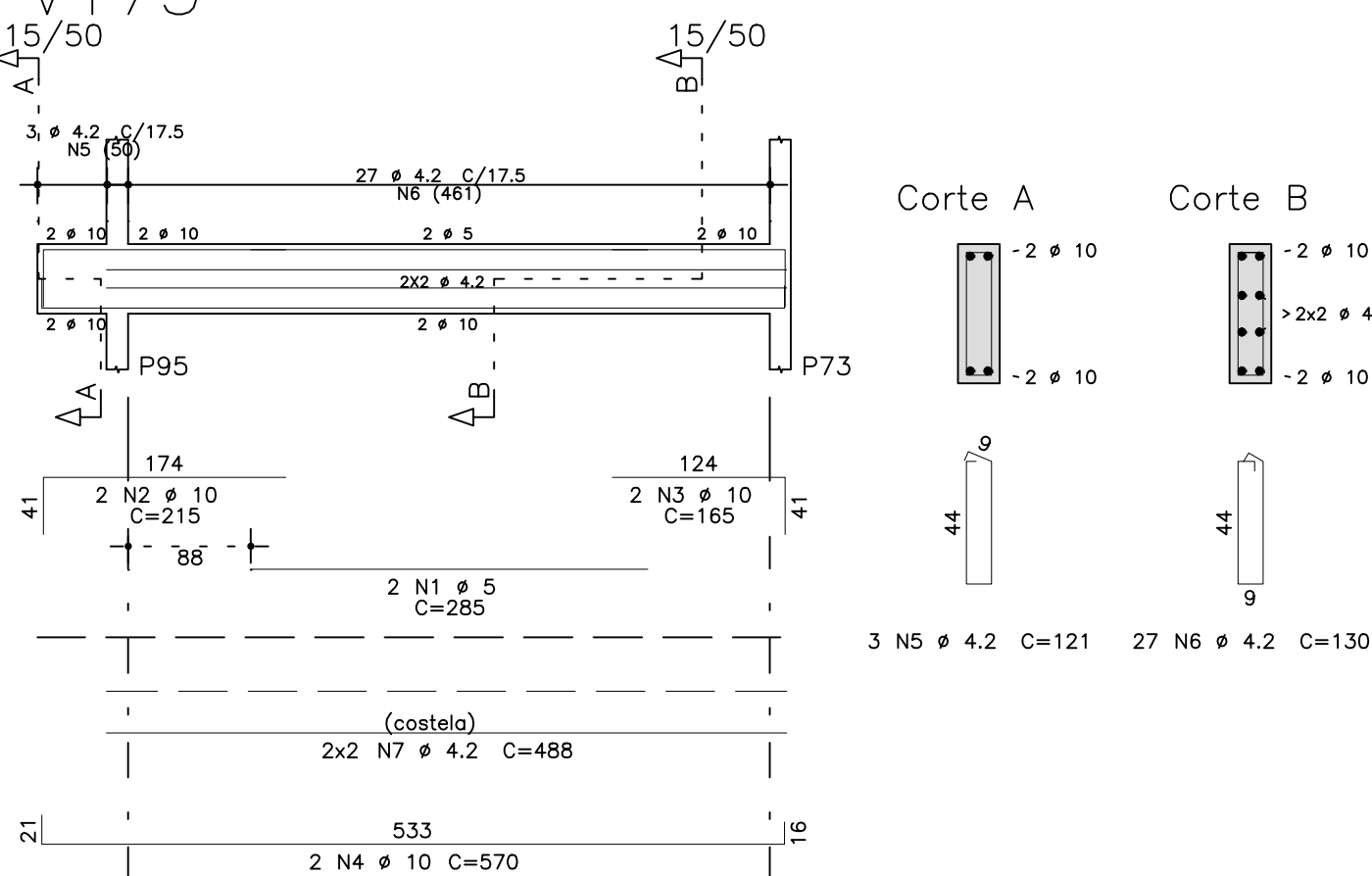
V136



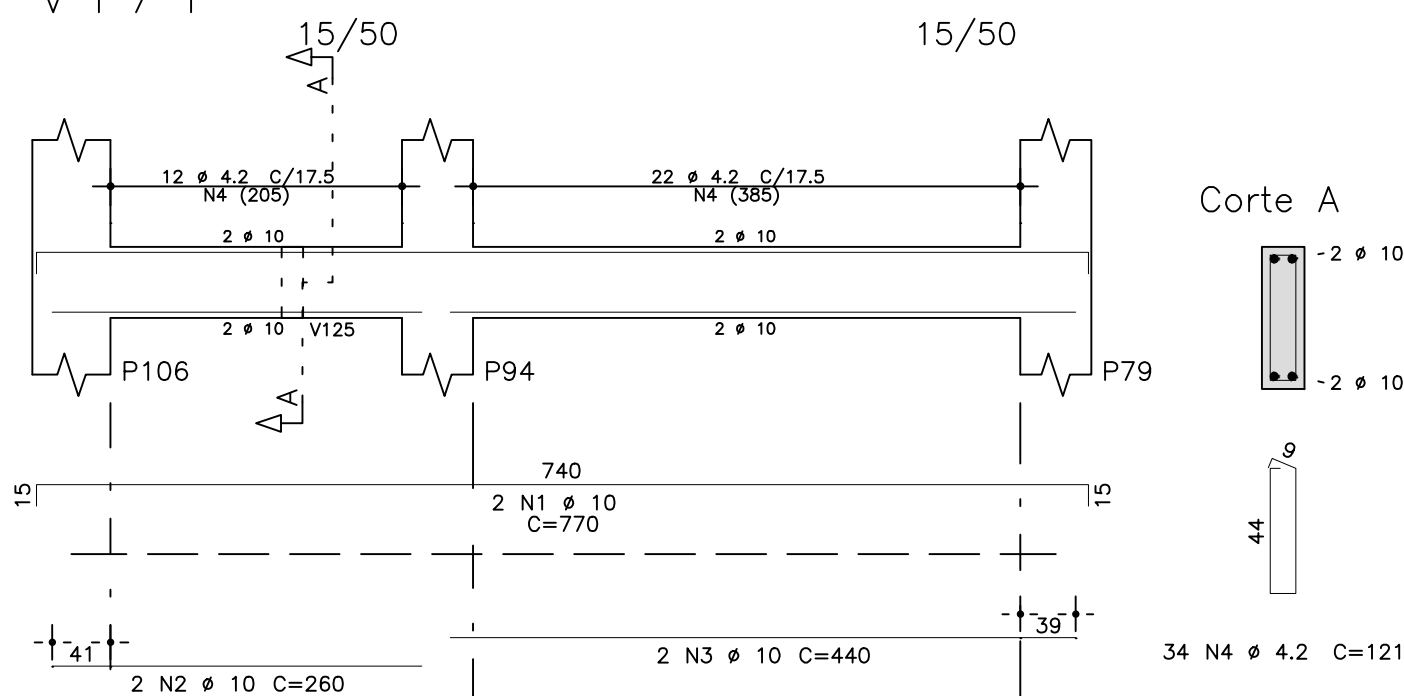
V103



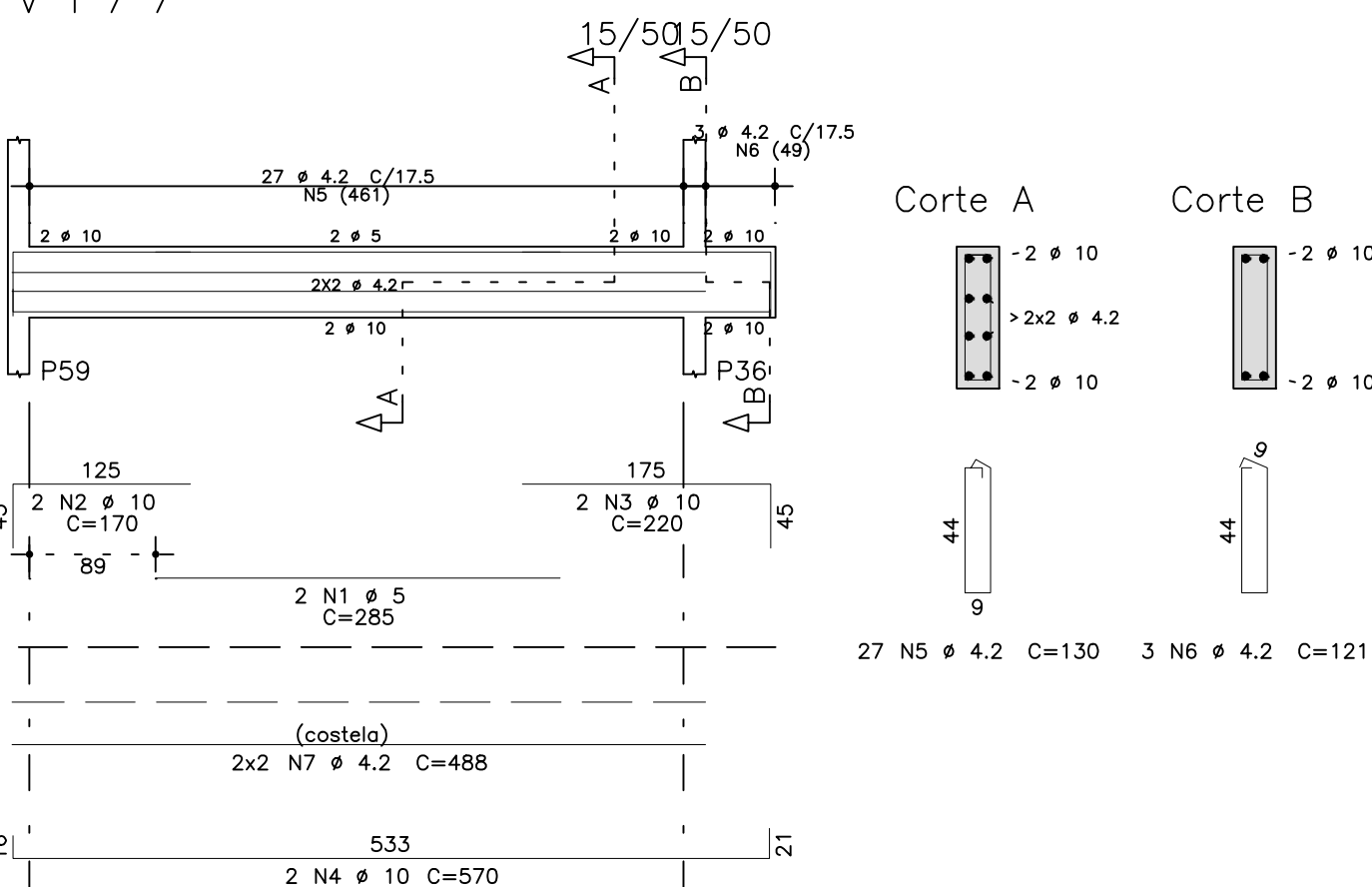
V175



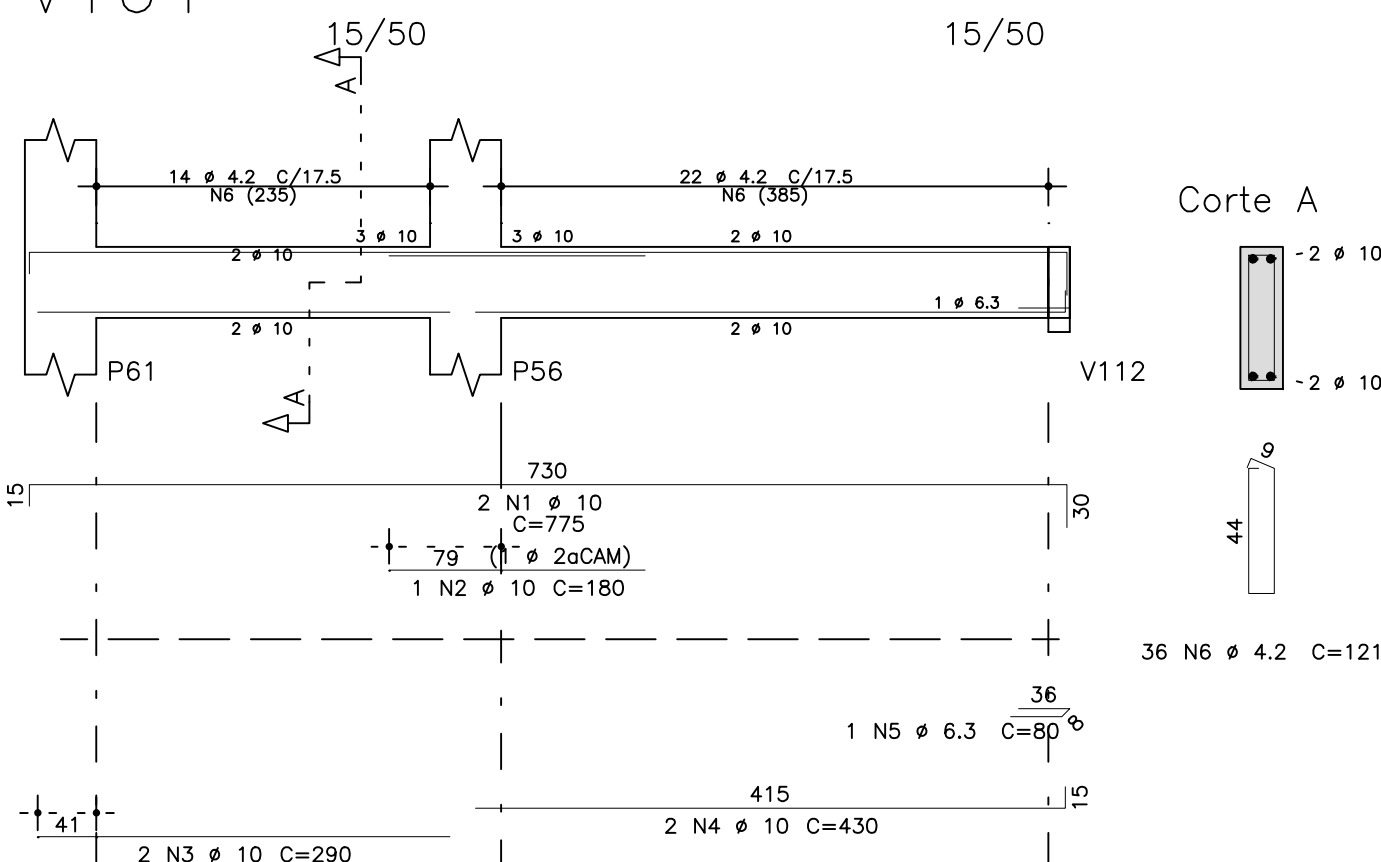
V171



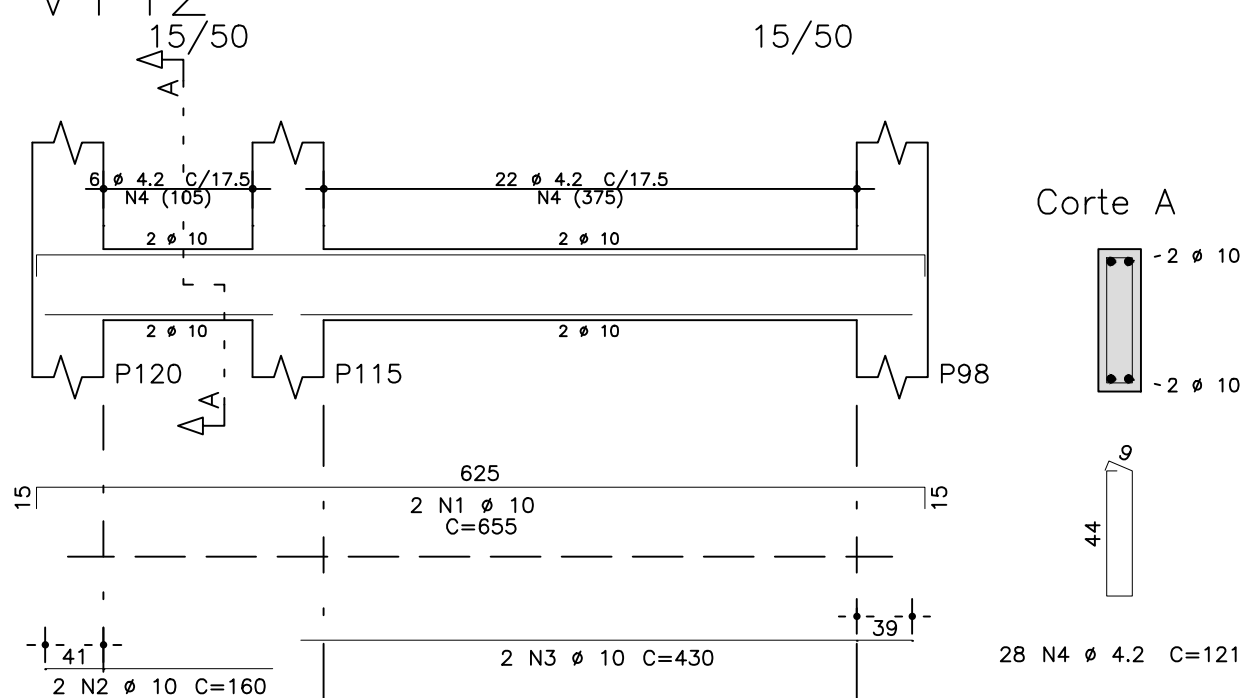
V177



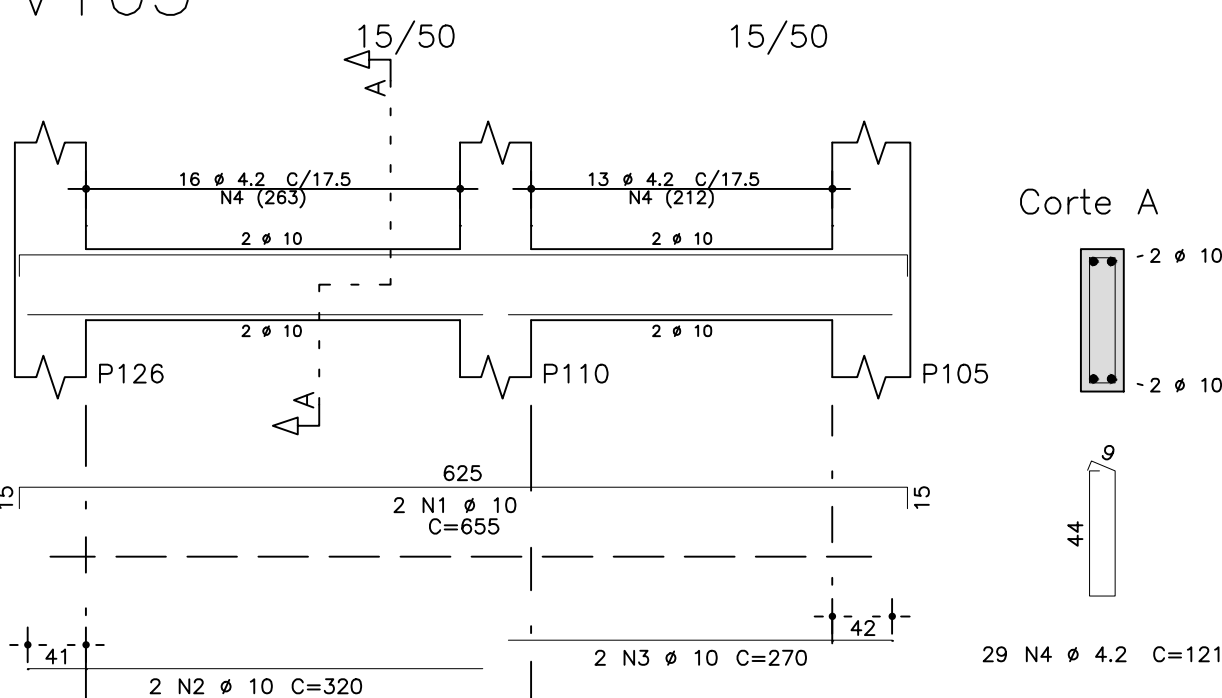
V164



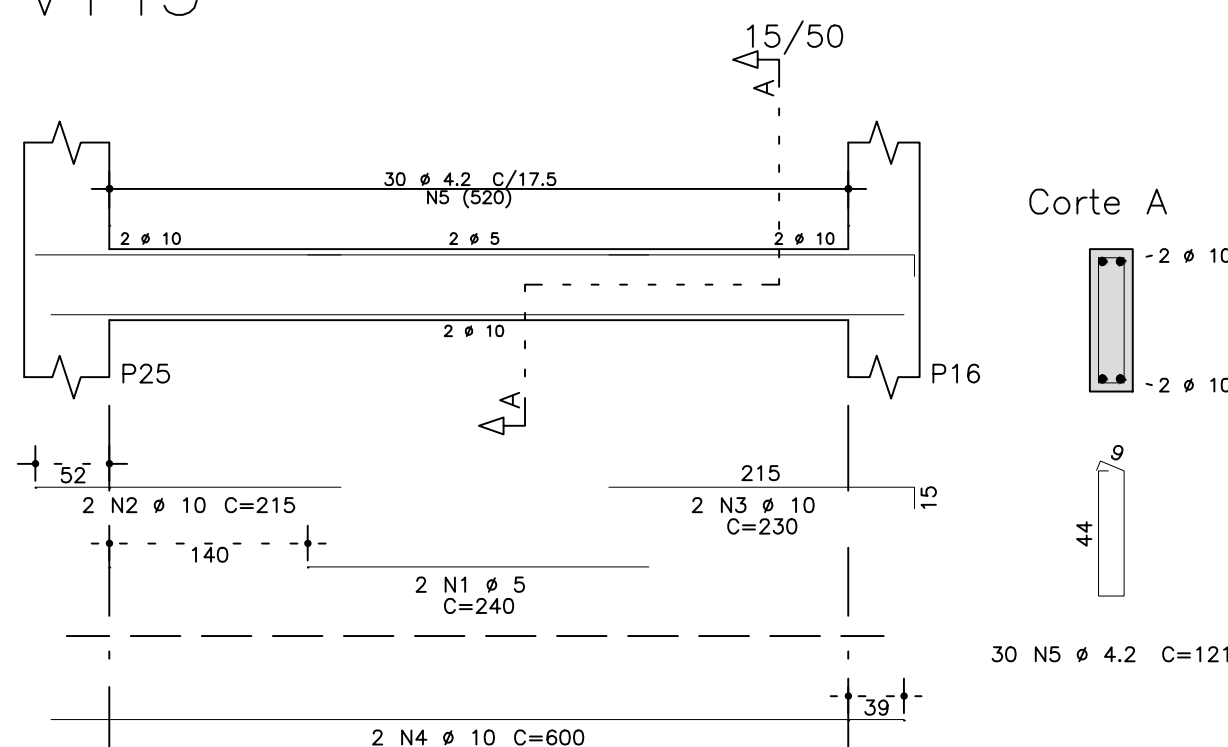
V142



V165



V143



	AÇO	POS	BIT (mm)	QUANT	COMPRIMENTO	
					UNIT (cm)	TOTAL (cm)
V102	50A	1	10	2	655	1310
	60B	2	5	2	325	650
	50A	3	10	1	150	150
	50A	4	10	2	190	380
	50A	5	10	2	1080	2160
	60B	6	4.2	58	121	7018
V103	50A	1	10	2	550	1100
	60B	2	5	2	200	400
	50A	3	10	2	165	330
	50A	4	10	2	815	1630
	50A	5	6.3	2	80	160
	60B	6	4.2	43	121	5203
V136	50A	1	10	2	915	1830
	50A	2	10	2	415	830
	50A	3	10	2	420	840
	50A	4	6.3	2	80	160
	60B	5	4.2	44	141	6204
	50A	6	6.3	12	415	4980
V142	50A	1	10	2	655	1310
	50A	2	10	2	160	320
	50A	3	10	2	430	860
	60B	4	4.2	28	121	3388
V143	60B	1	5	2	240	480
	50A	2	10	2	215	430
	50A	3	10	2	230	460
	50A	4	10	2	600	1200
V147	60B	5	4.2	30	121	3630
	50A	1	10	2	580	1160
	50A	2	10	2	180	360
	50A	3	10	2	345	690
	50A	4	6.3	1	80	80
V160	60B	5	4.2	25	121	3025
	50A	1	10	2	550	1100
	60B	2	5	2	205	410
	50A	3	10	1	195	195
	50A	4	10	2	230	460
	50A	5	10	1	175	175
	50A	6	10	2	305	610
	50A	7	10	2	575	1150
	50A	8	6.3	1	80	80
V164	60B	9	4.2	44	121	5324
	50A	1	10	2	775	1550
	50A	2	10	1	180	180
	50A	3	10	2	290	580
	50A	4	10	2	430	860
	50A	5	6.3	1	80	80
V165	60B	6	4.2	36	121	4356
	50A	1	10	2	655	1310
	50A	2	10	2	320	640
	50A	3	10	2	270	540
	60B	4	4.2	29	121	3509
	V171	50A	1	10	2	770
50A		2	10	2	260	520
50A		3	10	2	440	880
60B		4	4.2	34	121	4114
V175	60B	1	5	2	285	570
	50A	2	10	2	215	430
	50A	3	10	2	165	330
	50A	4	10	2	570	1140
	60B	5	4.2	3	121	363
	60B	6	4.2	27	130	3510
V177	60B	7	4.2	4	488	1952
	60B	1	5	2	285	570
	50A	2	10	2	170	340
	50A	3	10	2	220	440
	50A	4	10	2	570	1140
	60B	5	4.2	27	130	3510
V177	60B	6	4.2	3	121	363
	60B	7	4.2	4	488	1952

RESUMO AÇO CA 50-60			
AÇO	BIT (mm)	COMPR (m)	PESO (kg)
60B	4.2	574	63
60B	5	31	5
50A	6.3	55	14
50A	10	335	206
Peso Total		60B =	67 kg
Peso Total		50A =	220 kg

fck 250. kg/cm2

S Schuring & Schuring		Schuring & Schuring Ltda. Escritório Técnico B.E.SCHURING - Projetos de Engenharia Av. XV de Novembro, 489 - Porto 2o. Andar - Cuiabá MT Fone:(065) 321.8999 - Fax:(065) 623.5066 - Email - schuring@terra.com.br			
PROJETO:	PROPRIETÁRIO:	OBRA:			
PREFEITURA MUNICIPAL VARZEA GRANDE MT		EMEB ALINO FERREIRA MAGALHAES			
RESP. TEC. EXECUCÃO:		END.: AV. Verdão eq. c/ Rua "B" PARQUE DO LAGO - VARZEA GRANDE			
AUTORES DO PROJETO:	ASSUNTO:				
	DET VIGAS BALDRAME				
Benedito Eliseu Schuring Eng.Civil- CREA 715/D-MT		FOLHAS DETALHADAS V102 / V103 / V136 / V142 / V143 / V147 V160 / V164 / V165 / V171 / V175 / V177			
Andre Luiz Schuring Eng.Civil- CREA 8697/D-MT		FECH: 250 VERIFICAÇÃO: 250 ESCALA: 1:50	DATA: 250 FOLHA No. 33		